



Public Health
England

Protecting and improving
the nation's health

PHE Harlow The Hub

Welcome from Public Health England

Welcome to the third issue of The Hub, the community newsletter designed to keep you fully informed about PHE's plans to create a Science Hub at Harlow.

Our proposed development is located on the vacant GlaxoSmithKline (GSK) site, on the Pinnacles employment area in Harlow. The plans will see us relocate a major part of our scientific facilities as well as our headquarters to Harlow.

These proposals represent a once in a lifetime opportunity to bring together key public health functions for England on one site and to create a centre of excellence unique in Europe.



Do you want us to come and speak to your group?

Please get in touch,
we'd be more than
happy to talk to you.



A year of progress for PHE and Harlow

2016 was quite a year. Public Health England engaged with a large number of local organisations and individuals about our plans including attending meetings, setting up displays, delivering presentations and hosting two public exhibitions.

During the year we gathered huge numbers of your ideas, comments and feedback which were overwhelmingly positive. We will include this feedback, where possible, in our final design before we submit a planning application during summer 2017.

During 2017 and beyond, we will continue to communicate and consult with local people and welcome any comments or questions.

Key themes raised at our consultation events:

Jobs, training and apprenticeships:

We have made strong links with local educational establishments and started developing an apprenticeship scheme.

Transport: We are developing a comprehensive travel plan, which will emphasise alternative travel methods to the car.

Housing: We are regularly talking to Harlow Council about its plans for additional housing in the area.

For full details on how we are responding to your feedback see pages two and three.

If you have any questions about our plans, please do not hesitate to get in touch using the contact details below.

For the latest information about our plans visit:

www.gov.uk/phe/harlow

Look inside

You told us what you wanted...

Jobs and training

The creation of jobs, apprenticeships and training opportunities is nearly always the first topic to be raised in our discussions, with economic benefits for the whole of Harlow a very close second.

Our plans are simple: we want to recruit and retain the best possible talent, whether it is for our highly specialised roles or for the support staff we will need on the campus.

Initially we expect up to 2,750 staff will work at the campus. With provision for future potential expansion that figure could reach more than 3,200.

The boost to jobs and investment provided by PHE Harlow will have a positive impact on the local economy.

An increase in the number of people employed will lead to more money being spent in local businesses, supporting growth and prosperity.



Apprenticeships

Although first staff will not move onto the site until 2021/22, we have already begun laying the foundations for jobs and training.

Links are being established with schools, colleges and universities, including stalls at local careers fairs and taking part in early discussions to explore opportunities to develop an apprenticeship scheme.



We have held specific interactive sessions for local secondary and primary school students to engage with PHE scientists and are planning a programme of events to take place during Science Week 2017. Our engagement with schools, colleges and universities is ongoing.



Raising public awareness of signs and symptoms of cancer and encouraging people to see their GP



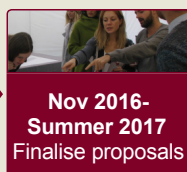
May 2016
First public
exhibition



**May 2016-
ongoing**
Consultation



Oct 2016
Second public
exhibition



**Nov 2016-
Summer 2017**
Finalise proposals



Summer 2017
Submit planning
application



Summer 2017
Harlow Council
consultation



2016 - 2019
Design and
tendering

... and this is how PHE is responding

Transport

From our engagement we're acutely aware that additional pressure on the transport network is a concern for people.

Our planning application to Harlow Council will be accompanied by an Environmental Statement that will include a chapter on transport impact and a Transport Assessment. These documents will assess the effects of traffic generated by the Science Hub and identify appropriate measures to lessen the impact.

These measures include the preparation of a detailed and extensive travel plan which will encourage staff and visitors to use alternative methods of travel to the private car. The site is already well connected to existing passenger transport services and pedestrian/cycle routes and current ideas include a shuttle bus service; car share scheme; cycle/walk to work schemes and alternative methods of working.



The effectiveness of the Travel Plan will be regularly monitored to ensure the right measures are in place to maximise its impact.

Housing

Another area of priority which has been raised with us many times is housing, especially the need for social and affordable housing in the area.



The Council is currently in the process of preparing a new Local Development Plan to address future housing and employment requirements, and has consulted on a number of example options for accommodating future growth. It will provide for new housing to meet Harlow's future needs over the period that PHE is developing and occupying the Science Hub.

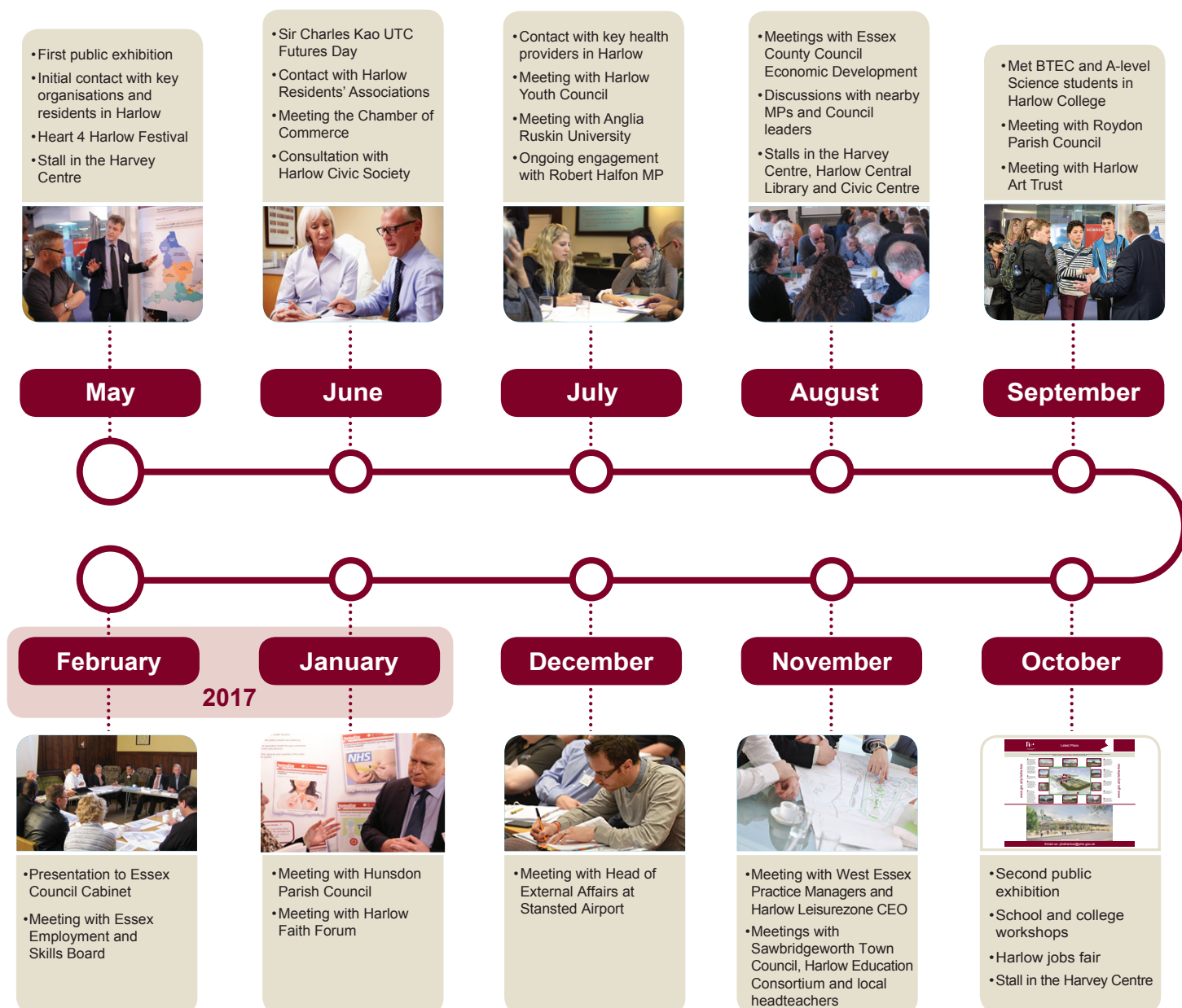
The new Science Hub is to be located on a major site in an existing designated employment area within Harlow and therefore already forms part of the employment land provision within the town.



Preventing childhood obesity by improving health behaviours such as poor diet and lack of physical activity



Listening to Harlow



Duncan Selbie
PHE Chief Executive

“ Ever since the Government supported our plans to create a public health Science Hub at Harlow, we have set out to engage across the local community. We are determined to achieve two things – to inform as many people as we can about our ambitions to build a world-class Science Hub and to provide those same people with the opportunity to give us their views and to help us shape our plans. As we look ahead to the submission of a planning application in the summer I don't want any of you to think our engagement ends there. It won't. It will continue for as long as we are part of the town and the community. ”

If you require this document in another format please contact publications@phe.gov.uk or call us on 020 8327 7018

Have your say

We are always keen to hear your views on our plans. You can email us at pheharlow@phe.gov.uk or call 0800 228 9100.

Keep in touch

@PHE_UK

FREEPOST PHE Harlow Consultation

pheharlow@phe.gov.uk

0800 228 9100